

PORSCHE

CARRERA CUP JAPAN



Porsche Carrera Cup Japan 2022

Round 5-6 Report : SUZUKA Circuit

28-29 May 2022

ENGLISH

Mobil 1™

MICHELIN

BOSS

TAG Heuer

APLUS

Suzuyo

BOSE

HAZET

PUMA

AGREX
TIS INTEC Group

PORSCHE

CARRERA CUP JAPAN

Contents

Contents	1
Round 5-6 Preview	2 - 3
Round 5-6 Entry List	4
SUZUKA Circuit	5
Round 5-6 Qualify (28, May, Saturday) Report	6 - 7
Round 5 Qualify Result	8
Round 5 Starting Grid	9
Round 5 Race (28, May, Saturday) Race Report	10 - 11
Round 5 Race Result	12
Round 6 Qualify Result	13
Round 6 Starting Grid	14
Round 6 Race [(29, May, Sunday)] Race Report	15 - 16
Round 6 Race Result	17
Driver and Team Point Standings (after Round 6)	18
Round 5-6 Photo Gallery	19 - 20



Am Class #17 KenRyu



PORSCHE

CARRERA CUP JAPAN

Porsche Carrera Cup Japan 2022 - Round 5-6 Preview



LJ Pro Class #60 R. OGAWA, Am Class #51 T. HARUYAMA

The 2022 season of Porsche Carrera Cup Japan (PCCJ), which introduced the latest 911 GT3 Cup (Type 992) as the Cup car this season, is being contested in six events and 11 races. The 1st and 2nd races were held at the Okayama International Circuit on April 16 and 17 and the 3rd and 4th races at the Fuji International Speedway on May 3 and 4, with the coming 5th and 6th races being the mid-season round. The races are fought with a mixture of three classes: Pro Class (Pro), ProAm Class (ProAm) and Am Class (Am), with heated battles taking place in each class.

The Suzuka Circuit, the stage for the 5th and 6th races, is also known as the stage for the F1 Japanese Grand Prix. With a total length of 5.807 km and a well-balanced layout of low-speed, medium-speed and high-speed corners, the circuit is highly regarded by drivers from all over the world. It is also characterised by its figure-eight layout, with a multi-level crossing, which is rare in the world, and a right-hand turn and left-hand turn interchangeably. Another highlight of the race is the battle in the first corner, where the cars enter it by utilizing the slipstream of the machine in front of them on the main straight in front of the grandstand from the exit of the last corner, and it will be highly interesting to see how the new Cup cars, its total package has evolved considerably, will battle it

out. As the course record has been broken at the Okayama International Circuit as well as the Fuji International Speedway so far, a lap time faster than the current course record of 2' 03.796 is highly expected to be also achieved at the Suzuka Circuit this time.

At the end of the four races of the Pro Class, the two champion-experienced drivers, #1 T. KONDO and #60 R. OGAWA have both won two races each, but in the point ranking, the leader #1 KONDO has 90 points while #60 OGAWA is in second place with 87 points. In last season's PCCJ, which was held at Suzuka for five races, #1 KONDO and #60 OGAWA recorded two wins and are evenly matched on this Grand Prix circuit. The coming two races will be the key to determine the fate of this year's PCCJ championship title, which is already in its midway stage.

Meanwhile, the ProAm Class is a three-way battle between veteran drivers #98 IKARI, #77 M. HAMASAKI and 2017 series champion #9 S. TAKEI. After #9 TAKEI won the season opening race, the second and third races were won by #98 IKARI, who is determined to win the class championship for the first time this year. In the 4th race, #77 HAMASAKI won for the first time



PORSCHE

CARRERA CUP JAPAN

Porsche Carrera Cup Japan 2022 - Round 5-6 Preview

since the 8th race in 2020. In the point ranking, #98 IKARI is in first place with 87 points, #77 HAMASAKI in second place with 86 points and #9 TAKEI in third place with 42 points, so we can expect a good battle between the best of the best at Suzuka. In the Am Class, #10 M. TAKAMI, who is competing for the first time this year in PCCJ but is a threat to the ProAm Class drivers, has won four consecutive races since the season opening race. However, as the veteran PCCJ drivers and other first-time entrants are gradually getting used to the new Cup cars, it will be interesting to see if there will be a driver who can stop the winning streak of #10 TAKAMI at Suzuka.

The 5th and 6th races of the PCCJ Series at Suzuka is scheduled as follows. Two exclusive 30-minute driving sessions will take place on Friday, May 27, 2022. The first session will be run between 8:15 and 8:45 am, while the second session follows from 10:30 to 11:00 am. The next day, Saturday, May 28, will see the only official qualifying session, from 11:45 am to 12:15 pm. The 5th race starts at 16:40 on Saturday, May 28, with 15 laps or within 30 minutes, while the 6th race starts at 11:35 am on Sunday, May 29th, again with 15 laps or within 30 minutes. For your information, both the 5th and 6th races will be streamed live on the Porsche Japan twitter account (@PorscheJP) each day.



PORSCHE

CARRERA CUP JAPAN

Porsche Carrera Cup Japan 2022 - Round 3-4 Entry List

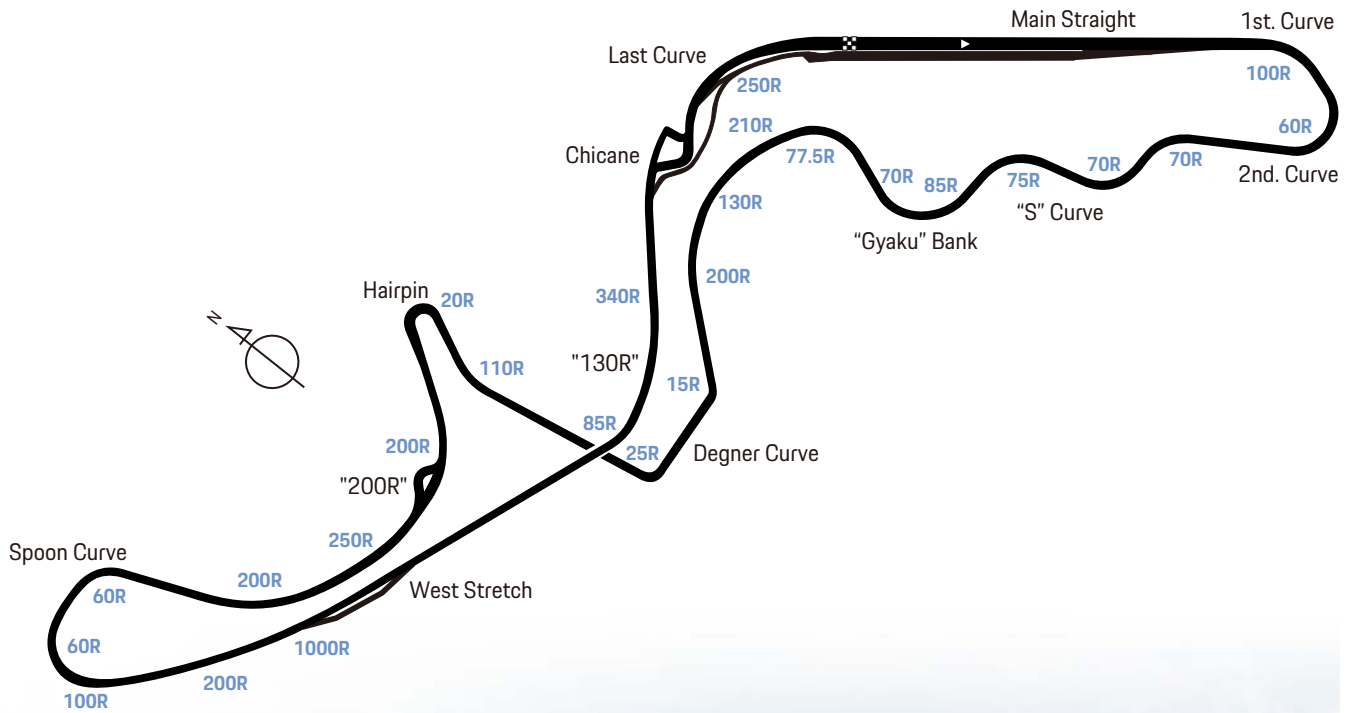
	Car No.	Class	Driver Name	Country	Program Name	Entrant
1	1	Pro	Tsubasa KONDO	JPN	NIHON KIZAI PORSCHE	NK Racing
2	7	Pro	Ryo YAMADA	JPN	HYPER WATER Racing Team	Team KRM
3	60	Pro	Ryo OGAWA	JPN	SHOWA AUTO with BINGO RACING	BINGO RACING
4	9	ProAm	Shinji TAKEI	JPN	BINGO RACING	BINGO RACING
5	77	ProAm	Masaru HAMASAKI	JPN	VOING with VENTILER	Masaru HAMASAKI
6	98	ProAm	IKARI	JPN	BJR PORSCHE	Bionic Jack Racing
7	5	Am	CASA MINGO	JPN	Yougasitenn CASA MINGO	TEAM RIGHTWAY
8	10	Am	MOTOKI TAKAMI	JPN	47TRADING with Rn-sports	Rn-sports
9	17	Am	KenRyu	JPN	Fach Auto Tech	911Service
10	23	Am	Tomoyuki TAKIZAWA	JPN	Fach Auto Tech	911Service
11	51	Am	Tsugio HARUYAMA	KOR	BINGO RACING	BINGO RACING
12	63	Am	Shigeto NAGASHIMA	JPN	TUC GROUP & TeamKRM	Team KRM



PORSCHE

CARRERA CUP JAPAN

SUZUKA Circuit Course



Suzuka Circuit

Overall Length	5,807m
East Course	2,243m
West Course	3,475m
Course Width	10m - 16m
Straight	800m
West Stretch	1,000m
Corner	18 (Left:8 Right:10)
Altitude Difference	40m

PCCJ Course Record Time

Pro Class (or Overall)	: 2'03.812	Ukyo SASAHARA - 911 GT3 Cup (Type991 II)	2019 SUPER GT Rd.3
ProAm Class (or Gentleman Class)	: 2'05.049	Hirokazu SUZUKI - 911 GT3 Cup (Type991 II)	2018 SUPER GT Rd.3
Am Class	: No Record		

PORSCHE

CARRERA CUP JAPAN

Porsche Carrera Cup Japan 2022 - Round 5-6 Qualify



P.P. #1 T.KONDO

Track condition: Sunny / Dry, Air temp. 27°C, Track temp. 36°C

The 2022 season of PCCJ, with the introduction of the latest version of 911 GT3 Cup, the Type 992, marks the first Suzuka round of the season. This year, the PCCJ series will be contested in six events and eleven races, so this Suzuka round will be the turnaround races of the season. On Friday, May 27th, the day before the official qualifying session, two exclusive driving sessions were held, and #1 T. KONDO marked 2' 03.733 in the Pro Class to take the top overall position. In the ProAm Class, #98 IKARI took the top spot with a time of 2' 06.731, while in the Am Class, #10 M. TAKAMI, who has won four consecutive races from the season opening race, topped the ProAm Class with a time of 2' 06.067.

On May 28th, when the official qualifying session was held, the air temperature rose from the morning, reaching 27 degrees Celsius at the start of the session at 11:55 am. When the 30-minute qualifying session started, all the 12 Cup cars went onto the track at once, checking the track surface conditions and running lap after lap. Then, on the third lap, almost all the machines made their first full time attack, and the course records were set in each class. The three machines in the Pro

Class recorded times of 2' 02.665 for #1 KONDO, 2' 03.386 for #7 R. YAMADA and 2' 03.443 for #60 R. OGAWA, all of which were faster than the previous class course record of 2' 03.796. The machines then returned to the pit for machine adjustments and tyre changes for the second time attack and headed out again for another full-time attack. Here, #7 YAMADA took the lead by recording a lap time of 2' 02.537, while #60 OGAWA marked 2' 02.979. Then, #1 KONDO, who had been carefully watching the situation from the pit, also made his last full-time attack and set a time of 2' 02.317, which was a significant improvement over the previous class course record, to take pole position in the end. After the qualifying session, #1 KONDO said: "The new Cup car was fast at Suzuka, too so that I was able to record times in the 2-second range. I hope to have a good battle with the other two machines in the coming race." #7 YAMADA, in second place, said: "I am glad to have taken second place, even though this was a sudden entry. In Okayama, I failed to make a good start at both races, so this time I am going to put my mind to it", while #60 OGAWA, in third position, says of his enthusiasm for the race, "I was able to give it my all in the qualifying session, so I want to catch up with the two machines in front of me in the coming race."



PORSCHE

CARRERA CUP JAPAN

Porsche Carrera Cup Japan 2022 - Round 5-6 Qualify

Pole position in the ProAm Class went to #9 S. TAKEI, who set a class course record of 2' 05.322. #9 TAKEI said: "We adjusted the machine for the second time attack, and it worked out. I will do my best to keep my position in the coming race". In the Am Class, #10 M. TAKAMI took pole position for the fifth consecutive race, setting a class course record with a time of 2' 05.489. "I made a lot of mistakes in the qualifying session today," #10 TAKAMI said regretfully after the session. #63 S. NAGASHIMA, in second place, also set a new course record in the Am Class and said enthusiastically, "Suzuka is a course I like, so I will push hard in the coming race."

The results of the qualifying session for the 6th race, which was decided by the second-best lap time during the qualifying session, were the same as the 5th race, with #1 KONDO taking pole position in the Pro Class, #9 TAKEI in the ProAm Class and #10 TAKAMI in the Am Class.

The 5th race of the season starts at 16:40 on Saturday, May 28th with 15 laps or in 30 minutes while the 6th race will start at 11:35 am on Sunday, May 29th, also running 15 laps or in 30 minutes. For your information, both the 5th and 6th races will be streamed live on the Porsche Japan Twitter account (@PorscheJP) on each day.



Am Class P.P. #10.M.TAKAMI



ProAm Class P.P. #9 S.TAKEI



PORSCHE

CARRERA CUP JAPAN

Porsche Carrera Cup Japan 2022 - Round 5 Qualify Result

Weather :Fine

Track :Dry

Full Course 4-Wheels(5,807m)

Pos	No	Class	C.P.	Name	Team/Car	Best Time	Gap	Lap
1	1	Pro	1	Tsubasa KONDO	NIHON KIZAI PORSCHE	R2'02.317		8 / 9
2	7	Pro	2	Ryo YAMADA	HYPER WATER Racing Team	R2'02.537	0.220	8 / 11
3	60	Pro	3	Ryo OGAWA	SHOWA AUTO with BINGO RACING	R2'02.979	0.662	7 / 8
4	9	ProAm	1	Shinji TAKEI	BINGO RACING	R2'05.322	3.005	10 / 11
5	98	ProAm	2	IKARI	BJR PORSCHE	R2'05.378	3.061	3 / 5
6	10	Am	1	MOTOKI TAKAMI	47TRADING with Rn-sports	R2'05.489	3.172	8 / 10
7	63	Am	2	Shigeto NAGASHIMA	TUC GROUP & TeamKRM	R2'06.405	4.088	8 / 14
8	77	ProAm	3	Masaru HAMASAKI	VOING with VENTILER	2'06.739	4.422	4 / 11
9	5	Am	3	CASA MINGO	Yougashiten CASA MINGO	2'08.069	5.752	11 / 12
10	23	Am	4	Tomoyuki TAKIZAWA	Fach Auto Tech	2'08.110	5.793	8 / 10
11	51	Am	5	Tsugio HARUYAMA	BINGO RACING	2'09.795	7.478	5 / 11
12	17	Am	6	KenRyu	Fach Auto Tech	2'10.002	7.685	8 / 13

Start Time :11:55'00 Finish Time :12:25'00

Entry :12 Start :12

R Course Record

Pro	2021/10/30	2'03.796	68 km/h	Tsubasa KONDO / NIHON KIZAI PORSCHE
ProAm	2021/10/30	2'05.937	97 km/h	IKARI / BJR PORSCHE
Am	2021/10/30	2'07.657	61 km/h	Masa TAGA / GIRODISC·CREF Motorsport CUP

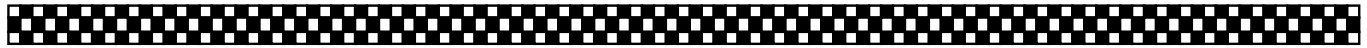


Am Class #5 CASA MINGO

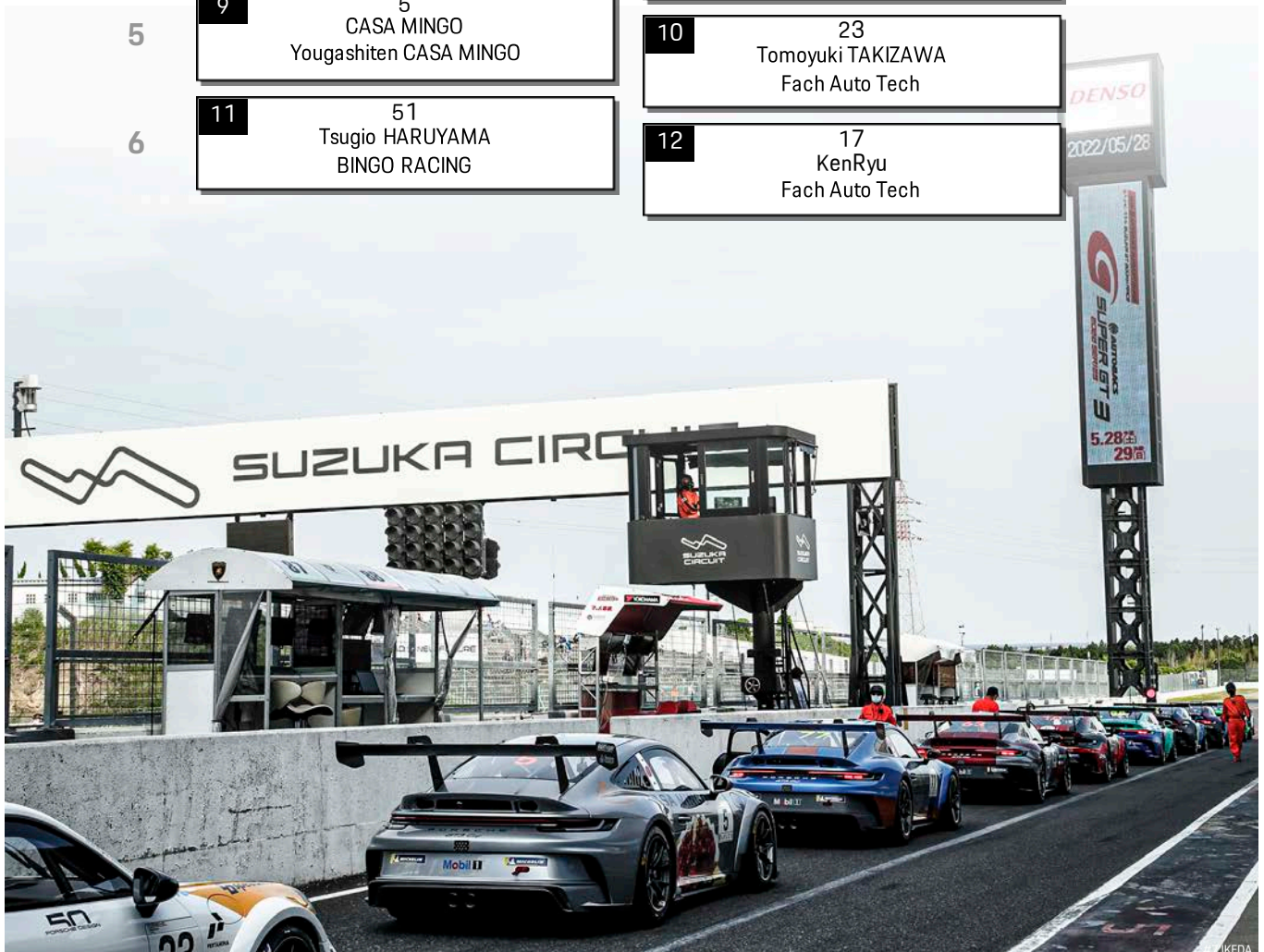
PORSCHE

CARRERA CUP JAPAN

Porsche Carrera Cup Japan 2022 - Round 5 Starting Grid



1	1 Tsubasa KONDO NIHON KIZAI PORSCHE	2	7 Ryo YAMADA HYPER WATER Racing Team
2	3 Ryo OGAWA SHOWA AUTO with BINGO RACING	4	9 Shinji TAKEI BINGO RACING
3	5 IKARI BJR PORSCHE	6	10 MOTOKI TAKAMI 47TRADING with Rn-sports
4	7 Shigeto NAGASHIMA TUC GROUP & TeamKRM	8	77 Masaru HAMASAKI VOING with VENTILER
5	9 CASA MINGO Yougashiten CASA MINGO	10	23 Tomoyuki TAKIZAWA Fach Auto Tech
6	11 Tsugio HARUYAMA BINGO RACING	12	17 KenRyu Fach Auto Tech



PORSCHE

CARRERA CUP JAPAN

Porsche Carrera Cup Japan 2022 - Round 5 Race



Track condition: Sunny / Dry, Air temp. 27°C, track temp. 35°C

The qualifying session for the 5th race of the PCCJ 2022, which was held during the morning on May 28th, was hotly contested with course records of the Suzuka Circuit being broken in all the classes, Pro Class, ProAm Class and Am Class. In the Pro Class, #1 T. KONDO, who won his fourth series championship last year and has won two races this year so far, took his fifth consecutive pole position, followed by #7 R. YAMADA in second and #60 R. OGAWA in third. In the ProAm Class, #9 S. TAKEI and in the Am Class, and #10 M. TAKAMI took pole position for the fifth consecutive race from the season opening race, each setting the class course record.

The 5th race officially began with the formation lap at 16:50, and when all the machines lined up on the starting grid again and the signal red was blacked out, the heated battle was on. In the Pro Class, pole position driver #1 KONDO was a step behind at the start, while third placed driver #60 OGAWA got an excellent start and went through the first corner as the race

leader. #1 KONDO stayed right behind #60 OGAWA and continued to apply pressure on #60 OGAWA from behind in a nose-to-tail formation. However, #60 OGAWA was calm and in no hurry, and kept the lead until the end to take his third win of the season. In the end, the gap to second-placed #1 KONDO was just 0.233 seconds. "Today I was able to make a good start and was able to take the lead, which was the reason for my victory. The pressure by Kondo from behind was very severe, but I was able to get away from him," said delighted #60 OGAWA. While #1 KONDO, in second place, said: "I almost stalled the engine at the start so that I got off to a slow start. I had been seeking an opportunity to attack Ogawa, but I could not have a chance." Meanwhile, #7 Yamada, in third place, says: "Ogawa's start was outstanding today. And I could not keep up with the two machines in front of me during the race, so I will review the set-up of my machine for tomorrow's race". With this race result, #60 OGAWA leads the series in points with 112 while #1 Kondo with 110 points.

In the ProAm Class, #98 IKARI, second starter in his class, took

PORSCHE

CARRERA CUP JAPAN

Porsche Carrera Cup Japan 2022- Round 5 Race

the lead at the start and was chased hard by #9 TAKEI, but #98 IKARI kept the lead and managed escape to the end to take his third win of the season. #9 TAKEI, who finished in second place, expressed his frustration by saying, "The start was everything today" Meanwhile, in the Am Class, #63 S. NAGASHIMA overtook #10 TAKAMI on the final lap at the Dunlop Corner to take the chequered flag in top position. After finally stopping the winning streak of #10 TAKAMI, #63 NAGASHIMA expressed his joy by saying: "I am very happy today. I was looking for a chance and was able to get in front of Takami when his machine swelled up a bit at the very end. This is my first win of the season at last, but I want to get back on track from here." #10 TAKAMI, who finished in second place, expressed his frustration by saying: "The tyres were tough today...."

The 6th race of the PCCJ 2022 series is scheduled to start at 11:35 am on Sunday, May 29th, also with 15 laps or within 30 minutes. The pole positions for each class on the starting grid are as the 5th race with #1 KONDO in the Pro Class, #9 TAKEI in the ProAm Class, and #10 TAKAMI in the Am Class. For your information, the 6th race will be also streamed live on the Porsche Japan Twitter account (@PorscheJP).



Am Class Winner : #63 S.NAGASHIMA



R) ProAm Class Winner #98 IKARI, 2nd #9 S.TAKEI



PORSCHE

CARRERA CUP JAPAN

Porsche Carrera Cup Japan 2022 - Round 5 Race Result

Weather :Fine Track: Dry

Pos	No	Class	C.P.	Name	Team/Car	Lap	Total Time	Gap		Best Time
1	60	Pro	1	Ryo OGAWA	SHOWA AUTO with BINGO RACING	10	20'57.567			2'04.906
2	1	Pro	2	Tsubasa KONDO	NIHON KIZAI PORSCHE	10	20'57.800	0.233	0.233	2'04.980
3	7	Pro	3	Ryo YAMADA	HYPER WATER Racing Team	10	21'07.435	9.868	9.635	2'04.939
4	98	ProAm	1	IKARI	BJR PORSCHE	10	21'19.021	21.454	11.586	2'06.779
5	9	ProAm	2	Shinji TAKEI	BINGO RACING	10	21'19.896	22.329	0.875	2'06.543
*1	6	ProAm	3	Masaru HAMASAKI	VOING with VENTILER	10	21'22.660	25.093	2.764	2'06.956
7	63	Am	1	Shigeto NAGASHIMA	TUC GROUP & TeamKRM	10	21'23.081	25.514	0.421	2'07.148
8	10	Am	2	MOTOKI TAKAMI	47TRADING with Rn-sports	10	21'24.238	26.671	1.157	2'07.033
9	23	Am	3	Tomoyuki TAKIZAWA	Fach Auto Tech	10	21'46.965	49.398	22.727	2'09.273
10	17	Am	4	KenRyu	Fach Auto Tech	10	21'47.669	50.102	0.704	2'08.704
11	5	Am	5	CASA MINGO	Yougashiten CASA MINGO	10	21'48.334	50.767	0.665	2'08.859
12	51	Am	6	Tsugio HARUYAMA	BINGO RACING	9	22'04.023	1Lap	1Lap	2'09.746

Fastest Lap

Pro	2'04.906 (2 / 10)	167.367 km/h	60	Ryo OGAWA / SHOWA AUTO with BINGO RACING
ProAm	2'06.543 (4 / 10)	165.202 km/h	9	Shinji TAKEI / BINGO RACING
Am	2'07.033 (3 / 10)	164.565 km/h	10	MOTOKI TAKAMI / 47TRADING with Rn-sports

Start Time:16:53'56 Finish Time:17:14'53

Entry:12 Start:12 Finish:12

No.1 : Black/White Flag (Running off the track)

*1 No.77 : Reprimand (Course off while the yellow flag is displayed.)



Pro Class Podium



ProAm Class Podium



Am Class Podium



L) Am Class : 3rd #23 T.TAKIZAWA, 4th #17 KenRyu

PORSCHE

CARRERA CUP JAPAN

Porsche Carrera Cup Japan 2022 - Round 6 Qualify Result

Track: Dry

Pos	No	Class	C.P.	Narr	Team/Car	Best Time	Gap	Lap
1	1	Pro	1	Tsubasa KONDO	NIHON KIZAI PORSCHE	R2'02.665		3 / 9
2	7	Pro	2	Ryo YAMADA	HYPER WATER Racing Team	R2'03.386	0.721	0.721 3 / 11
3	60	Pro	3	Ryo OGAWA	SHOWA AUTO with BINGO RACING	R2'03.443	0.778	0.057 3 / 8
4	9	ProAm	1	Shinji TAKEI	BINGO RACING	R2'05.506	2.841	2.063 9 / 11
5	98	ProAm	2	IKARI	BJR PORSCHE	R2'05.711	3.046	0.205 4 / 5
6	10	Am	1	MOTOKI TAKAMI	47TRADING with Rn-sports	R2'06.225	3.560	0.514 3 / 10
7	63	Am	2	Shigeto NAGASHIMA	TUC GROUP & TeamKRM	R2'06.571	3.906	0.346 7 / 14
8	77	ProAm	3	Masaru HAMASAKI	VOING with VENTILER	2'06.841	4.176	0.270 7 / 11
9	5	Am	3	CASA MINGO	Yougashiten CASA MINGO	2'08.435	5.770	1.594 12 / 12
10	23	Am	4	Tomoyuki TAKIZAWA	Fach Auto Tech	2'08.537	5.872	0.102 4 / 10
11	51	Am	5	Tsugio HARUYAMA	BINGO RACING	2'09.834	7.169	1.297 3 / 11
12	17	Am	6	KenRyu	Fach Auto Tech	2'10.161	7.496	0.327 7 / 13

R Course Record

Pro	2021/10/30	2'03.796	68 km/h	Tsubasa KONDO / NIHON KIZAI PORSCHE
ProAm	2021/10/30	2'05.937	97 km/h	IKARI / BJR PORSCHE
Am	2021/10/30	2'07.657	61 km/h	Masa TAGA / GIRODISC · CREF Motorsport CUP



PORSCHE

CARRERA CUP JAPAN

Porsche Carrera Cup Japan 2022 - Round 6 Starting Grid



1	1 Tsubasa KONDO NIHON KIZAI PORSCHE	2	7 Ryo YAMADA HYPER WATER Racing Team
2	3 60 Ryo OGAWA SHOWA AUTO with BINGO RACING	4	9 Shinji TAKEI BINGO RACING
3	5 98 IKARI BJR PORSCHE	6	10 MOTOKI TAKAMI 47TRADING with Rn-sports
4	7 63 Shigeto NAGASHIMA TUC GROUP & TeamKRM	8	77 Masaru HAMASAKI VOING with VENTILER
5	9 5 CASA MINGO Yougashiten CASA MINGO	10	23 Tomoyuki TAKIZAWA Fach Auto Tech
6	11 51 Tsugio HARUYAMA BINGO RACING	12	17 KenRyu Fach Auto Tech



PORSCHE

CARRERA CUP JAPAN

Porsche Carrera Cup Japan 2022 - Round 6 Race



Track condition: Sunny / Dry, Air temp. 31°C, Track temp. 46°C

Pole position for the 6th race of the PCCJ 2022, which was decided by the second-best lap times from the qualifying session held the day before, on May 28th, was the same as the qualifying session for the 5th race in all three classes: #1 T. KONDO in the Pro Class, #9 S. TAKEI in the ProAm Class and #10 M. TAKAMI in the Am Class. However, the 5th race was won by #60 R. OGAWA from 3rd on the starting grid in the Pro Class, #98 IKARI from 2nd on the starting grid in the ProAm Class and #63 S. NAGASHIMA from 2nd on the starting grid in the Am Class, so all eyes were on the 6th race to see how the race would unfold.

At 11:35 am, the formation lap for the 6th race began. After checking the track conditions and warming up the tyres, all the 12 machines lined up on the starting grid again and the race officially got underway. In the Pro Class, pole position driver #1 KONDO lost a step while second placed driver #7 R. YAMADA made a good start and went through the first corner as the race leader. #1 KONDO was also passed by #60 OGAWA, dropping back to third, and continued to apply pressure on #60 OGAWA from behind. While #60 OGAWA and #1 KONDO continued their nose-to-tail

battle, the race leader, #7 YAMADA, gradually widened the gap to the second place and below. However, in the second half of the race, #60 OGAWA and #1 KONDO gradually began to close the gap to the race leader #7 YAMADA. Then, on the seventh lap, an accident occurred at the entrance to the Chicane Corner when #9 TAKEI and #98 IKARI, who were battling for top position in the ProAm Class, collided each other. As a result, the safety car was brought in on the eighth lap and the race was red flagged and suspended on the ninth lap. As a result, the race result was based on each driver's position at the end of the eighth lap.

In the Pro Class, #7 YAMADA took the lead at the start and went on to win the race for the first time this season, with #60 OGAWA in 2nd place and #1 KONDO in 3rd. #7 YAMADA, who won the race, commented: "I was able to make a good start which I was tasked with, and after that I drove hard to keep up with the pressure from Ogawa. I am glad that I was able to come in to enter the event suddenly on Friday and end up winning the race." 2nd-placed #60 Ogawa reflected on the race, "I was trying to save my tyres to catch up with Yamada towards the end of the race, but the race was red-flagged." Meanwhile, #1 KONDO, in third place, said: "I failed to get a good start

PORSCHE

CARRERA CUP JAPAN

Porsche Carrera Cup Japan 2022 - Round 6 Race

yesterday, so I was hoping to do it better today, but it did not work out. The challenge I need to overcome in the future will be the start," he said, vowing to make up for it in the next round.

In the ProAm Class, #77 M. HAMASAKI won due to an accident involving #9 TAKEI and #98 IKARI, who were battling for the top spot. However, he said: "I do not have any particular comment as it was not a win based on my ability today". In the Am Class, #10 TAKAMI took the win for the fifth time this season after a great performance that put him between the three ProAm Class machines. #10 TAKAMI said: "I was looking forward to seeing how far I could keep up with the two ProAm Class machines today, but the race was red-flagged at the end ... " 2nd-placed #63 S. NAGASHIMA expressed his disappointment by saying: "I was aiming for another chance today, but I was not able to do it so."

The next two races, the 7th and 8th races of the PCCJ 2022 Series will be held at the Fuji International Speedway (Shizuoka Prefecture) on Saturday, August 6 and Sunday, August 7 after over 2 months of interval. It is the second Fuji event of the season, and it will be interesting to see how the drivers, who are getting used to drive the new Cup cars, perform in the qualifying session and races.



FJ Am Winner #10 M.TAKAMI, ProAm Winner #77 M.HAMASAKI, Am 2nd #63 S.NAGASHIMA



FJ Am Class 3rd #23 T.TAKIZAWA, 4th #51 T.HARUYAMA, 6th #17 KenRyu



Pro Class Winner #7 R.YAMADA



FJ Am Class 5th #5 CASA MINGO



FJ ProAm 2nd #9 S.TAKEI, 3rd #98 IKARI, Am Winner #10 M.TAKAMI, ProAm Winner #77 M.HAMASAKI



Red Flag



PORSCHE

CARRERA CUP JAPAN

Porsche Carrera Cup Japan 2022 - Round 6 Race Result

Pos	No	Class	C.P.	Name	Team/Car	Lap	Total Time	Gap	Best Time
1	7	Pro	1	Ryo YAMADA	HYPER WATER Racing Team	8	17'12.296		2'04.836
2	60	Pro	2	Ryo OGAWA	SHOWA AUTO with BINGO RACING	8	17'12.815	0.519	2'04.948
3	1	Pro	3	Tsubasa KONDO	NIHON KIZAI PORSCHE	8	17'17.543	5.247	2'05.069
4	10	Am	1	MOTOKI TAKAMI	47TRADING with Rn-sports	8	17'23.877	11.581	2'07.622
5	77	ProAm	1	Masaru HAMASAKI	VOING with VENTILER	8	17'27.113	14.817	2'07.601
6	63	Am	2	Shigeto NAGASHIMA	TUC GROUP & TeamKRM	8	17'29.934	17.638	2'07.456
7	23	Am	3	Tomoyuki TAKIZAWA	Fach Auto Tech	8	17'47.759	35.463	2'10.099
8	51	Am	4	Tsugio HARUYAMA	BINGO RACING	8	17'52.363	40.067	2'11.073
9	5	Am	5	CASA MINGO	Yougashiten CASA MINGO	8	18'42.536	1'30.240	2'08.954
10	9	ProAm	2	Shinji TAKEI	BINGO RACING	7	16'35.425	1Lap	2'07.516
11	98	ProAm	3	IKARI	BJR PORSCHE	6	12'50.711	2Laps	2'07.611
12	17	Am	6	KenRyu	Fach Auto Tech	6	13'14.033	2Laps	2'10.957

Weather :Fine Track :Dry

Fastest Lap

Pro	2'04.836 (2 / 8)	167.461 km/h	7	Ryo YAMADA / HYPER WATER Racing Team
ProAm	2'07.516 (3 / 7)	163.942 km/h	9	Shinji TAKEI / BINGO RACING
Am	2'07.456 (4 / 8)	164.019 km/h	63	Shigeto NAGASHIMA / TUC GROUP & TeamKRM

Safety Car :11:53'56(7Laps)~

Red Flag :11:59'11(8Laps) --> Race ends with red flag display.



Pro Class Podium



ProAm Class Podium



Am Class Podium



PORSCHE

CARRERA CUP JAPAN

Porsche Carrera Cup Japan 2022 - Point Ranking (after Round 6)

Pro Class Ranking

Rank.	Car No.	Driver Name	Point	OKAYAMA		FUJI		SUZUKA		FUJI		SUZUKA		SUZUKA
				Rd.1 16. Apr.	Rd.2 17. Apr.	Rd.3 03. May	Rd.4 04. May	Rd.5 28. May	Rd.6 29. May	Rd.7 6. Aug.	Rd.8 7. Aug.	Rd.9 27. Aug.	Rd.10 28. Aug.	Rd.11 9. Oct.
1	60	Ryo OGAWA	132	25	20	17	25	25	20					
2	1	Tsubasa KONDO	127	20	25	25	20	20	17					
3	91	Ryunosuke SAWA	71	17	17	20	17	--	--					
4	7	Ryo YAMADA	70	14	14	--	--	17	25					

ProAm Class Ranking

Rank.	Car No.	Driver Name	Point	OKAYAMA		FUJI		SUZUKA		FUJI		SUZUKA		SUZUKA
				Rd.1 16. Apr.	Rd.2 17. Apr.	Rd.3 03. May	Rd.4 04. May	Rd.5 28. May	Rd.6 29. May	Rd.7 6. Aug.	Rd.8 7. Aug.	Rd.9 27. Aug.	Rd.10 28. Aug.	Rd.11 9. Oct.
1	98	IKARI	129	17	25	25	20	25	17					
2	77	Masaru HAMASAKI	127	20	20	20	25	17	25					
3	9	Shinji TAKEI	82	25	17	--	--	20	20					

Am Class Ranking

Rank.	Car No.	Driver Name	Point	OKAYAMA		FUJI		SUZUKA		FUJI		SUZUKA		SUZUKA
				Rd.1 16. Apr.	Rd.2 17. Apr.	Rd.3 03. May	Rd.4 04. May	Rd.5 28. May	Rd.6 29. May	Rd.7 6. Aug.	Rd.8 7. Aug.	Rd.9 27. Aug.	Rd.10 28. Aug.	Rd.11 9. Oct.
1	10	MOTOKI TAKAMI	145	25	25	25	25	20	25					
2	63	Shigeto NAGASHIMA	114	20	20	9	20	25	20					
3	23	Tomoyuki TAKIZAWA	94	17	14	17	12	17	17					
4	5	CASA MINGO	82	12	12	20	14	12	12					
5	17	KenRyu	67	10	10	14	9	14	10					
6	51	Tsugio HARUYAMA	62	9	9	12	8	10	14					
7	66	BANKCY	56	14	17	8	17	--	--					
8	7	IKEDA	20	--	--	10	10	--	--					

Team Ranking

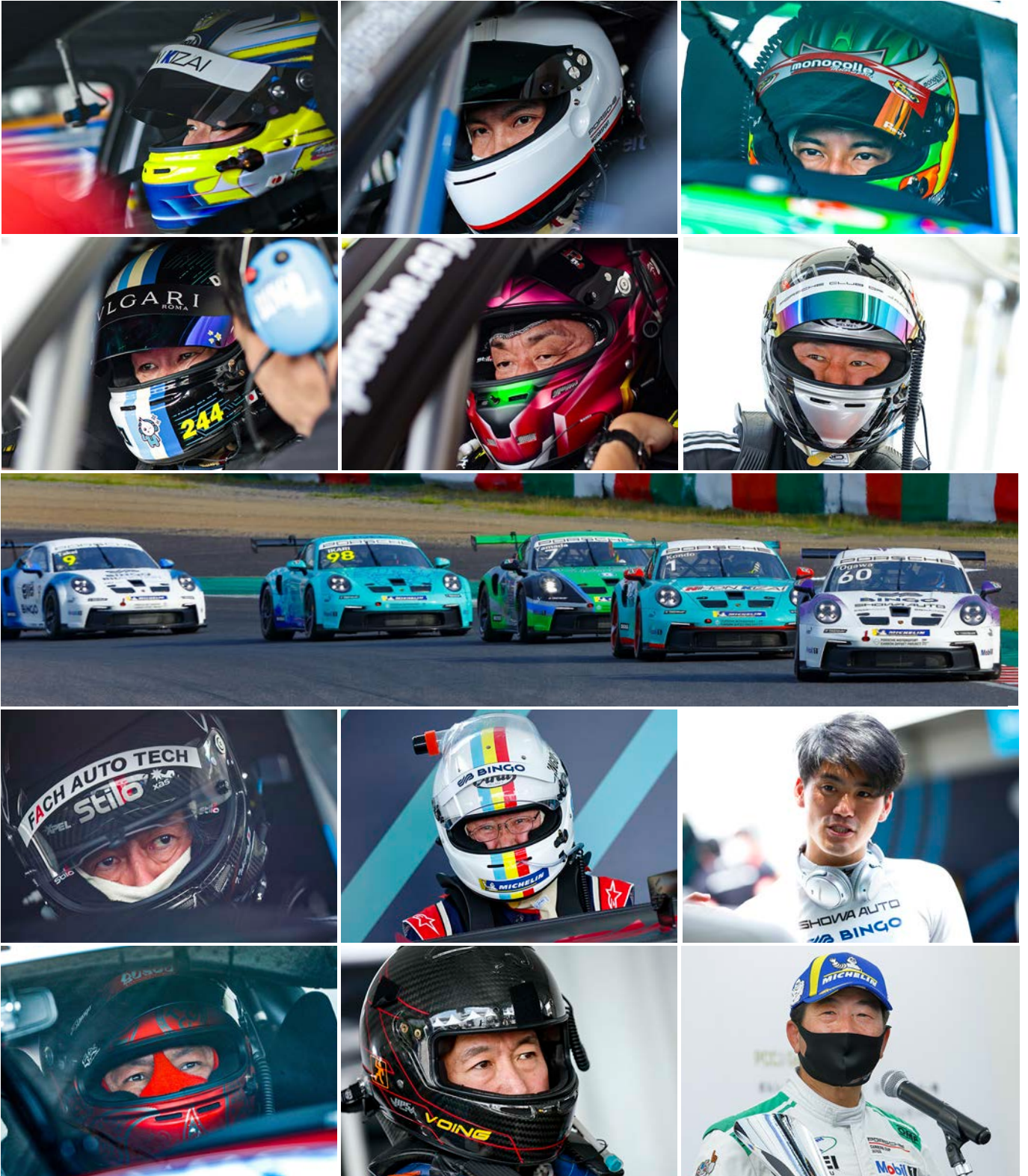
Rank.	Team Name	Point	OKAYAMA		FUJI		SUZUKA		FUJI		SUZUKA		SUZUKA
			Rd.1 16. Apr.	Rd.2 17. Apr.	Rd.3 03. May	Rd.4 04. May	Rd.5 28. May	Rd.6 29. May	Rd.7 6. Aug.	Rd.8 7. Aug.	Rd.9 27. Aug.	Rd.10 28. Aug.	Rd.11 9. Oct.
1	BINGO RACING (#9, #51, #60, #66)	186	37	28	23	33	37	28					
2	Team KRM (#7, #63)	126	21	21	9	14	26	35					
3	911Service (#17, #23)	68	9	8	15	10	13	13					



PORSCHE

CARRERA CUP JAPAN

Porsche Carrera Cup Japan 2022 - Round 5-6 Gallery



PORSCHE

CARRERA CUP JAPAN

Porsche Carrera Cup Japan 2022 - Round 5-6 Gallery



Rd.5 Pro Class Top 3



Rd.5 ProAm Class Top 3



Rd.5 Am Class Top 3



Rd.6 Pro Class Top 3



Rd.6 ProAm Class Top 2



Rd.6 Am Class Top 3

